



THE PROSPECT TOWER

Prospect United Methodist Church

A Growing Christian Community of Faith in Action

October 2009

Vol. 70, No. 8

From the Pastor's Pen

Dear Friends,

There is much discussion among “church experts” that what churches declining in membership need is a shift from a “culture of membership” to a “culture of discipleship.” That is, from thinking about church as a sort of club to thinking about church as a group of people in action. While this may strike some as an unwelcome change, we need to remember that the church began, disciple by disciple, as a group in action. Sadly, the change occurred over many years to where the church is all too often today: a club that people join so as to receive the benefits of club-membership.



Hear how Tony Robinson puts it in his book, *What's Theology Got to Do With It*: “The point is not membership. The church does not have clients, members, or consumers of goods and services. The church exists to form and sustain individuals and a people who are followers of Jesus Christ, who are his disciples. Rather than buying into a consumer model of the church, where the customer is king and the church simply meets customers’ needs, the church does more; the church redefines our true needs. The church transforms people according to the life and pattern revealed by God in Jesus Christ. It unites them with others who are committed to this way of life.”

The experts (and although I’m hardly an expert I agree with them) are of one mind that unless churches (like ours) recover or rediscover our God-given identity as a group of people called and bound together for a common purpose and mission (to help God love the world), we will die. Little by little, we will go the way of other institutions that are losing membership and support because our culture doesn’t value highly what they have to offer (museums, symphonies, theaters, etc.).

Club-like churches may die. Actually, they probably should. Something far more important than our personal preferences are at stake.

See you at 99 Summer Street where we are trying hard to be disciples and not just members,

Pastor Dennis

Prospect United Methodist Church

Founded 1834
99 Summer St., Bristol, CT 06010

The Rev. Dr. Dennis Winkleblack
Transitional Interim Pastor

Rev. William S. Barnes,
Pastor Emeritus

The Rev. Albert H. Scholten
The Rev. George E. Harris
The Rev. Alan J. Krauss
Ministers in Residence

Heidi Flower,
Director of Music & Organist
Graceann Grindal,
Assoc. Organist & Director
Amy Kelley, Chapel Organist

Phone: (860) 582-3443
Fax: (860) 582-9224

E-Mail Addresses:
pastorpumc@snet.net

(information meant only for the pastor)

prospectoffice@snet.net

(all general information as well as information necessary for the Church Secretary.)

Website:

[http://www.gbgm-umc.org/
prospect-ct/index.htm](http://www.gbgm-umc.org/prospect-ct/index.htm)

■ A MESSAGE FROM JILL WILSON, CHURCH COUNCIL CHAIR

Behind the scenes many church leaders have been very actively focusing on two very important strategies towards building a stronger congregation....

Remember “Natural Church Development”? The minimum factor in our congregation was determined to be ‘Spirituality.’ Many new changes and opportunities have been established to move us in the right direction: Christianity 101, Bible study, and a visit from the Conference Mission Director, to name a few.

Remember “Rethink Church”?..... There is a small focus group just getting started examining and working to involve the 18-35 year-olds in discovering one of the 10,000 doors one can go through to find and spread God’s love in the world; the Rockwell and Ride for Homelessness, CROP walk to name a few.

We have clearly learned that we cannot just keep doing what we had been doing and expect a different result. Our goals are to improve ourselves as disciples. As Disciples of Christ we have much to do in this world. I encourage each of you to continue to grow as a Christian both in and out of our doors. Support change that will allow this to happen.

■ FINANCE UPDATE

Summary of Pledges, Offerings, and Income Received

	August 2009	Year-to-Date (YTD)	Expected Income YTD	Amount Ahead or Behind (-) YTD
Pledges & Offerings	10,439	96,926	100,833	-3,907
Other Income	1,431	20,389	25,939	-5,550
	\$11,870	\$117,315	\$126,772	-\$9,457

■ HOW WILL WE PAY OUR PASTOR IN 2010?

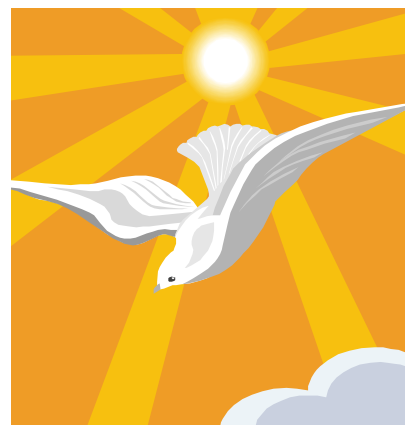
As we all consider our stewardship for 2010 in the coming weeks, the question of how much of a pastor we want is a vital question. Pastor Dennis is appointed to serve Prospect for $\frac{3}{4}$ time and serves as the Assistant to the Bishop for $\frac{1}{4}$ time. We are blessed that Pastor Dennis is providing more time, energy, leadership, and pastoral care to this congregation than his paychecks warrant. We, the people of Prospect UMC, need to be prepared to pay a full-time pastor to lead us in our ministries and help us continue on the path of changes we have begun with Pastor Dennis.

Here are some examples to illustrate what this might mean. To have a full-time pastor, for whom we pay 100% of the salary and benefits we will need to add a minimum of \$10,000 to our expense budget. This estimate is for a relatively new pastor at the bottom of the minimum salary scale. To have a pastor appointed to Prospect with more experience could easily increase the cost of the total compensation package by approximately \$15,000 - \$17,000. To retain a pastor with the experience and skills of Pastor Dennis and pay 100% of his or her salary and benefits would require the congregation to pay almost twice what we are responsible for under the pastoral cost sharing arrangement we have now with the annual conference, an increase of over \$40,000.

In the coming weeks and months, as you pray about your stewardship and as you respond to questions about what qualities and skills you think we should have in our next pastor, please also prayerfully consider the significance of a full-time pastor to the life of this church. A full-time spiritual leader is vital to the long-term health and growth of Prospect. Together, as a congregation, we need to do what we can to ensure that this need is filled so that we are able to do effective ministry in Bristol.

■ THE PASTORAL APPOINTMENT PROCESS

In July 2010, it is expected that our transitional interim pastor, Rev. Dr. Dennis Winkleblack, will be appointed to another church and Prospect UMC will receive a new pastor. People often have questions about this appointment process. How does the process work? Why does the Bishop appoint the pastor? How come the congregation



doesn't get to pick a pastor? These and other questions are all very valid musings. Below is an edited excerpt of an article about the appointment process, which answers these questions. It is from The United Methodist Church website. It can be found by going to the website and clicking on the following path of links: www.umc.org > Our World > MethoPedia > Church & Ministry > Pastoral Appointments.

Every local church needs a pastor. The United Methodist Church has a unique way of matching pastors and congregations. Rather than local churches hiring and firing their own pastors, as in some denominations, United Methodist bishops appoint pastors to serve in local churches and other ministry settings.

One advantage to this process is that a local church never has to go without a pastor. Likewise, a pastor never goes without a setting for ministry. The primary goal of the appointment system is to match the gifts and graces of a particular pastor to the ministry needs of a particular congregation at a particular time.

To understand the appointive process, it helps to know a little about how the United Methodist Church is organized. We are a connectional church. That means individual congregations are part of a larger network known as an annual conference under the leadership of a bishop. Most annual conferences consist of several districts. Ordained clergy are members of an annual conference rather than a local church.

Bishops are responsible for assigning pastors. Ordinarily, district superintendents assist the bishop in prayerfully making appointments. They generally meet with pastors and representatives of local churches every year to assess the effectiveness of ministry there.

The Staff Parish Relations Committee represents the congregation officially in this process. Usually, when everyone agrees that a current pastor's gifts and graces are a good match for the specific needs of a ministry setting, the

pastor is assigned to remain for another year. Sometimes, however, a particular pastor is needed elsewhere or a local church requires someone with a new set of gifts and graces. In that case, the pastor will move and the church will receive someone new.

Appointments are formally “fixed” each year at the regular session of the annual conference and they take effect on the first Sunday of July. Our appointment process puts The United Methodist Church in a unique position to help local churches broaden their understanding and experience about who can do effective ministry. For instance, many churches who would probably not have ‘hired’ a woman pastor on their own have learned to love and appreciate the clergywomen who have been appointed to serve them. Likewise, cross-racial and cross-cultural appointments invite congregations to value diversity in new ways.

Of course, non-traditional appointments also create challenges for both pastors and local churches. Our connectional system allows for training and support in the face of these challenges. We are always working to improve our appointment process in light of our mission to make disciples. One current trend is to foster longer term appointments so that pastors and local churches have more time to develop truly effective ministry.

■ SPR NEEDS YOUR INPUT

Later in October church members will receive a cover letter and survey from the Staff Parish Relations Committee (SPR) soliciting input on desired attributes for a new pastor for the time when our transitional interim pastor, Dennis Winkleblack, leaves the church. As you know, Pastor Dennis will be with us for a second year, ending in June. Since we don’t know if his tenure at Prospect will be extended beyond that, SPR wants to be prepared with goals for a new regular pastor. The committee also wants church members to know the process within the New York Conference for pastoral changes.

■ PROSPECT T-SHIRTS AVAILABLE

Show your pride in our church by ordering a new Prospect t-shirt. The gold t-shirts can be purchased for \$10 in four sizes: S, M, L and XL. The front logo says PUMC, Bristol, CT. The back logo says A NEW PROSPECT. Orders will be taken throughout October for an expected November delivery. They are ideal for wearing during community events, church dinners, yard clean-up, and more. Contact the church office, Joyce Rioux, or place your order during fellowship hour.

■ NEW D.S. TO ATTEND MEETING

The new Connecticut District Superintendent, Ken Kieffer, will attend the October 20th meeting of the Prospect Church Council. Ken Kieffer assumed the position in July, succeeding George Englehardt who is now pastor of the Jesse Lee U.M.C. in Easton after an eight-year term as D.S. The Church Council meeting is opened to all interested church members. Refreshments will be served.

Ken most recently was pastor of First United Methodist Church in Greenwich. A lifelong Methodist, he was baptized, confirmed and later married in the Islip (NY) United Methodist Church. After graduating from United Methodist-related Florida Southern College, he received the Master of Divinity degree from Candler School of Theology of Emory University. Prior to his appointment to First United Methodist Church in Greenwich in 2000, Ken served as pastor of United Methodist churches in Stratford and Norwalk (East Avenue), Connecticut, and Glendale, Queens.

Ken is a well-respected preacher and a gifted writer who had a weekly column in the Greenwich Times newspaper. Until recently, he hosted his own radio program as well. Under his pastoral leadership, First Church has grown in membership and attendance and includes persons from all socio-economic levels. Ken led the church in Disciple Bible Study

and organized and participated in several Volunteer in Mission trips. Also gifted with an entrepreneurial approach to ministry, Ken organized a Bible study program for professional golfers in the Greenwich area. In the New York Annual Conference, Ken presently serves as a member of the Board of Trustees and the Board of Ordained Ministry. Ken and Karen, a nursery school teacher, are the parents of 11 year-old Olivea.

■ NEW CONFERENCE NEWSPAPER LAUNCHED

The New York Annual Conference launched a new newspaper, "The Vision," on September 14th. For interested church members, go to nyac.com and click on The Vision in the left column, or type nyac.com/vision into your browser.

The Vision will continue to bring news from around the Conference, but will no longer be mailed in the former printed format. If you prefer a paper version, please feel free to download the file and print it on your home/office printer.

It will be available in three versions: high resolution (large file size), low resolution (small file size) and larger-type version for parishioners who have a harder time reading the paper.

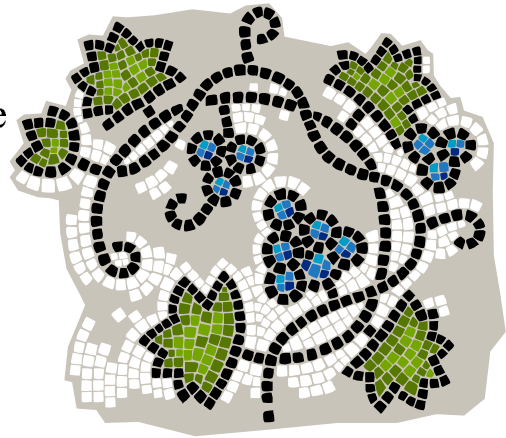
The free Adobe Reader program is needed to view and print these files.

■ ADULT BIBLE STUDY

Sunday Morning Adult Bible Study will begin meeting on October 4 in the parlor between the early chapel service and the sanctuary worship service. It will begin shortly after 9 a.m. and end at 10:50 a.m. so that people who attend either service will have the opportunity to participate. The structure of the group and the study material used will allow you to participate when you are able; it is not necessary that you commit to being present every week. Even if you've never been in a Bible study before, you'll find this to be a rich experience for involving faith in your daily life. The group will be led by rotating volunteers beginning with Linda Ice and Barry Nolan. Let them know if you're interested!

“Beginnings” - a Thursday Evening Adult Study Group will begin meeting on October 8 at 7 p.m. in the parlor. This will be a time to explore our faith in a small group setting. “Beginnings” is a spiritual journey for seekers, new believers, and long-time Christians who want to explore the basics of Christianity in a relaxed, nurturing atmosphere. Participants can bring questions, gain knowledge, and form or deepen their Christian faith. We'll address such questions as:

- So, is this all there is?
- Who is Jesus, and why should I care?
- What happens when I die?
- How does God speak to me?
- If I don't feel lost, why do I need to be found?
- How can I make a life and not just a living?



God's Word is Exciting!
Living Active Penetrating Sharp Life-Changing

The group will meet on six consecutive Thursday evenings, take a break for Advent, and complete the study in January and February. The initial six dates are October 8, 15, 22, and 29 and November 5 and 12. Each session will be from 7:00-8:30 p.m. with a refreshment break. The meeting schedule will include twelve sessions, with the possibility that we might accomplish up to three sessions in a single day-long retreat in the spring.

The group will be led by Tim Krauss and Janice Moore (with Pastor Dennis pitching in from time to time). Speak with Tim or Janice on Sunday to register or call Tim at 860-583-9236.

■ TYLER SCHAFFRICK IS EAGLE SCOUT

Prospect has another young church member who has attained the rank of Eagle Scout: Tyler Fredrick Schaffrick, son of Glenn and Sheila Schaffrick of Bristol, also members of our church. Tyler began his scouting career with Pack 30 at Edgewood School in 1996, where he earned the Arrow of Light before crossing over to Boy Scout Troop 29 at Northeast Middle School. There he progressed through Scout, Tenderfoot, Second Class, First Class, Star and Life ranks, earning 23 merit badges along the way.



He attained the rank of Eagle Scout on August 21, 2008, after completing a project benefitting the newly rebuilt Barnes Nature Center on Shrub Road. For the first part of the project Tyler helped restore the paths connecting the existing trails to the parking lot with crushed stone. Then he erected two log bridges on the nature trails behind the Nature Center so hikers won't get their feet muddy and wet. His Eagle Scout ceremony was held at the Elks Lodge on November 29, 2008.

During his scouting years Tyler served Troop 29 as Quartermaster, Librarian, Assistant Patrol Leader and Senior Patrol Leader. He also assisted in other ways, including helping out at Pinewood Derbies and on camping trips and conducting fundraising projects.

A graduate of Bristol Eastern High School, Tyler played saxophone in the band, belonged to the Ski Club, and was inducted into the Math National Honor Society. He attends Johnson State College, Johnson, VT, where he is working toward a degree in outdoor education with a concentration in adventure education-wilderness leadership and environmental education.

In addition to Tyler, Sam Lee (profiled in the previous Tower) and Ryan Pelletier also attained the rank of Eagle Scout.

■ PROSPECT BENEFITS ROCKWELL AND RIDE EVENT

Several members of Prospect took part in a benefit for the homeless on August 30th — the St. Vincent de Paul “Rockwell and Ride” event, co-sponsored by Biker’s Edge. Prospect’s participation was spurred by a recognition that families with children are among the fastest growing segments of the homeless population.

“The church had wonderful representation at the event,” said Church Council Chair Jill Wilson. The riders were Joyce Rioux, Barry Nolan, and Jill and Chris Wilson, all of whom finished the 25-mile course. Other volunteers in different capacities were Sue Powers, Rita Fasci, Marion and John Hickman, Jeanette Baker, Linda Ice, Karen and Stacey Rochelle, Laura Taylor,



Cliff and Jane Kayser, and Susan Lee. Money was collected during Coffee Hours following Sunday morning church services on behalf of the riders. All together \$285 was donated to the Bristol St. Vincent de Paul Mission which has operated an emergency shelter in Bristol since 1984. More recently, the program has expanded into transitional programs.

■ HISTORICAL SERVICE PLANNED

The November 8th church service will commemorate the 175th anniversary of Prospect United Methodist Church, once known as Prospect Methodist Episcopal Church. The History and Worship committees are working jointly to plan the event. Pastor Emeritus William Barnes will assist with the service.

Past Towers have detailed the history of the church back to the days when the first Methodist class was taught to local converts out of the former Burlington circuit. That history is available on Prospect's **website: <http://www.gbgm-umc.org/prospect-ct/History.html>**.

As part of the observance, members of the History Committee will give the children's sermons during the month of October.

The year 2010 is also the 225th anniversary of the city of Bristol. Prospect plans to offer the use of the church for an event during the year.

■ SNOW POLICY

Sunday morning services will not be cancelled except in the case of a major snow or ice storm. Members are advised to exercise caution in their church-going decisions, and not to risk life and limb.

Cancellation of special events (like fairs or larger programs) can be announced broadly on radio and TV.

Pastor Dennis is the contact (parsonage: 582-3336). We will use Channel 3, WFSB, and WTIC, Radio 1080 (only).

Cancellation of weekday meetings should be announced by phoning or e-mailing members.

Country Cupboard Fair

October 17
10 a.m. to 4 p.m.

A wonderful selection of items!!!

Christmas Shop | Cookie Shop | Fudge | Homemade Crafts | Apple and Pumpkin Pies | Other Baked Goods | and more.

A luncheon with homemade soups and sandwiches will be available in the dining room.

We are asking for your help to make this year's fair a success.

- Perhaps a donation - Mail it to the church with a 'Fair' notation.
- Perhaps a baked good - Bring it to the church the day of the fair between 9 a.m. and noon
- Perhaps a craft item - Bring it to the Church before the day of the fair.

Don't forget to put the date on your calendar and bring a friend to the Fair.

Harvest Dinner

November 7

Join us this year for a wonderful chicken dinner with all the trimmings. The tables in the dining hall will be decorated beautifully and the service will be delightful. I know because you just might be one of them. See Karen Rochelle, Sue Powers or anyone on the Fair Committee for ticket information and/or to see how you can help. Enjoy the fellowship. Serve the Lord. Bring your friends and family to The Harvest Dinner Feast.



OCTOBER AT A GLANCE

SUNDAY SCHEDULE

8:30 a.m. Chapel Communion

A shorter version of the Sunday Service, with Holy Communion, in the Chapel, south side of Sessions Hall.

10:00 a.m. Sanctuary Service

Traditional service of worship in Sanctuary with hymns, prayers, sermon, children's and adult choir anthems and solos. Holy Communion the first Sunday of each month.

10:00 a.m. Church School

Children attend opening portion of service with family, then go to Sunday School classes.

11:00 a.m. Fellowship

Time of fellowship and friendship with coffee, tea, cookies and conversation in Sessions Hall.

FELLOWSHIP HOUR SCHEDULE

October 2009	Men's Fellowship
November 2009	Women's Group
December 2009	History

MEETING SCHEDULE

October 11	Worship 11:30 a.m.
October 20	Church Council 7 p.m.
November 9	Rethink Church 7 p.m.

EVENTS

October 17	Country Cupboard Fair
October 18	Rev. Joseph Edwoozie, Conference Coordinator of Missions, will visit and preach on October 18. A program will be presented directly after church.
November 1	Potluck
November 7	Harvest Dinner

**PROSPECT UNITED METHODIST CHURCH
99 SUMMER STREET
BRISTOL, CT 06010
Dated Material - Please Do Not Hold**

**Non-Profit Organization
U.S. Postage Paid
Permit #349
Bristol, CT 06010**

Return Service Requested

Periodical: Published monthly except July and August.